



INTERNATIONAL GEMOLOGICAL INSTITUTE

671417518



February 12, 2025
IGI Report Number 671417518
NATURAL DIAMOND
ROUND BRILLIANT

5.99 - 6.03 x 3.78 mm

Carat Weight 0.85 CARAT
Color Grade D
Clarity Grade VS 2
Cut Grade EXCELLENT
Polish EXCELLENT
Symmetry EXCELLENT
Fluorescence SLIGHT
Inscription(s) IGI 671417518
Comments: HEARTS & ARROWS

DIAMOND REPORT

Electronic COPY

February 12, 2025

IGI Report Number

671417518

Description

NATURAL DIAMOND

Shape and Cutting Style

ROUND BRILLIANT

Measurements

5.99 - 6.03 x 3.78 mm

GRADING RESULTS

Carat Weight

0.85 CARAT

Color Grade

D

Clarity Grade

VS 2

Cut Grade

EXCELLENT

ADDITIONAL GRADING INFORMATION

Polish

EXCELLENT

Symmetry

EXCELLENT

Fluorescence

SLIGHT

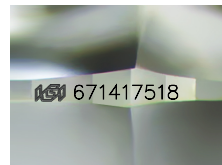
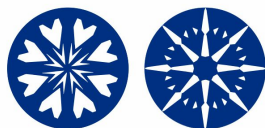
Identification Features

CRYSTAL, FEATHER

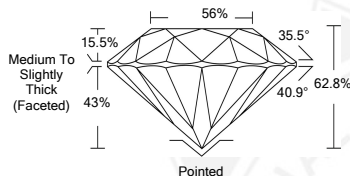
Inscription(s)

IGI 671417518

Comments: HEARTS & ARROWS



Sample Image Used



COLOR

D - F	G - J	K - M	N - R	S - Z	FANCY
Colorless	Near Colorless	Slightly Tinted	Very Light Color	Light Color	

CLARITY

IF	VVS ¹⁻²	VS ¹⁻²	SI ¹⁻²	I ¹⁻²
Internally Flawless	Very Very Slightly Included	Very Slightly Included	Slightly Included	Included



February 12, 2025
IGI Report Number 671417518
NATURAL DIAMOND
ROUND BRILLIANT

5.99 - 6.03 x 3.78 mm

Carat Weight 0.85 CARAT
Color Grade D
Clarity Grade VS 2
Cut Grade EXCELLENT
Polish EXCELLENT
Symmetry EXCELLENT
Fluorescence SLIGHT
Inscription(s) IGI 671417518
Comments: HEARTS & ARROWS

© IGI 2020, International Gemological Institute

FD - 10 20



THIS DOCUMENT WAS PRODUCED WITH THE FOLLOWING SECURITY MEASURES: SPECIAL DOCUMENT PAPER, INK SCREENS, WATERMARK BACKGROUND DESIGNS, HOLOGRAM AND OTHER SECURITY FEATURES NOT LISTED AND DO EXCEED DOCUMENT SECURITY INDUSTRY GUIDELINES.